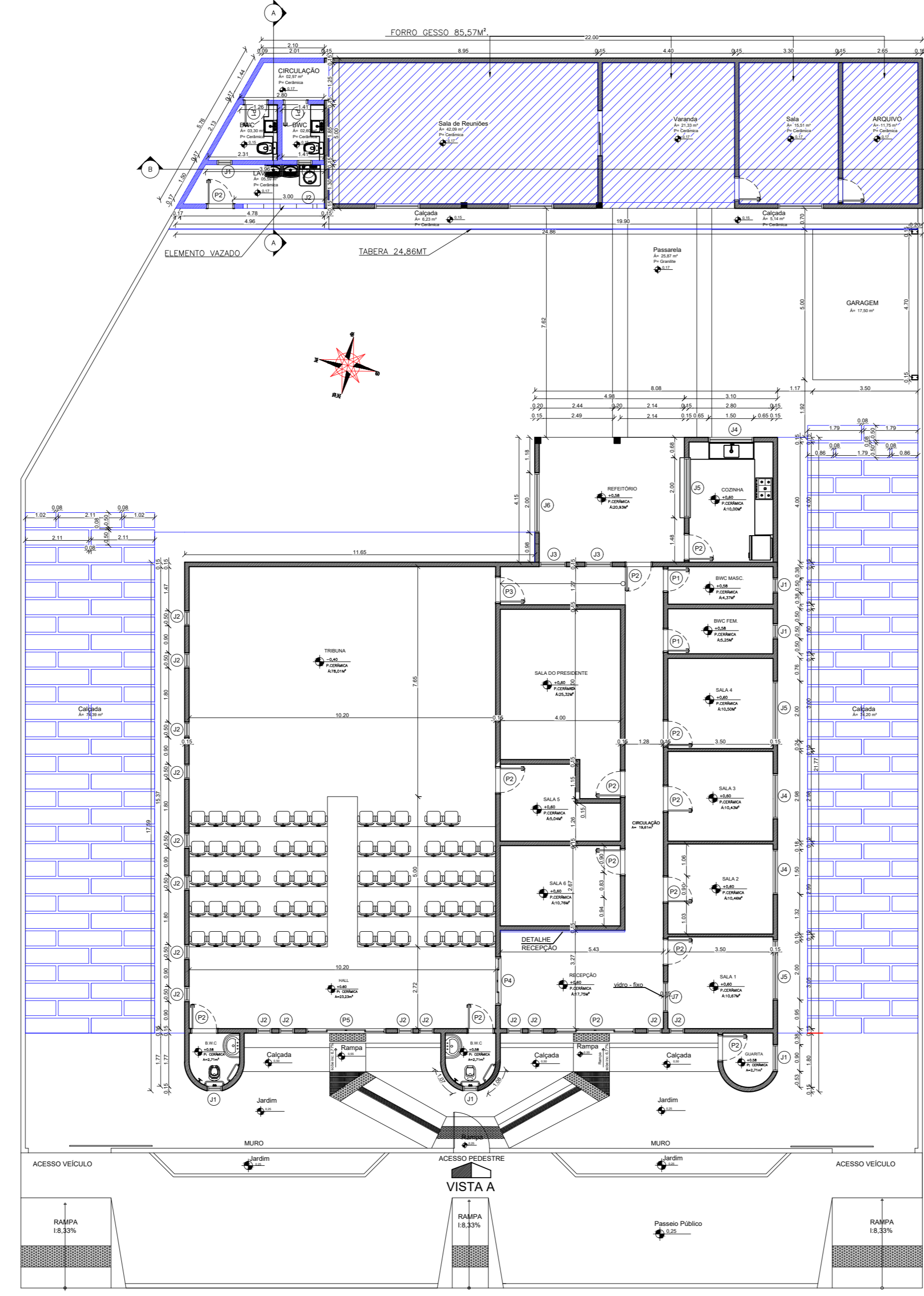
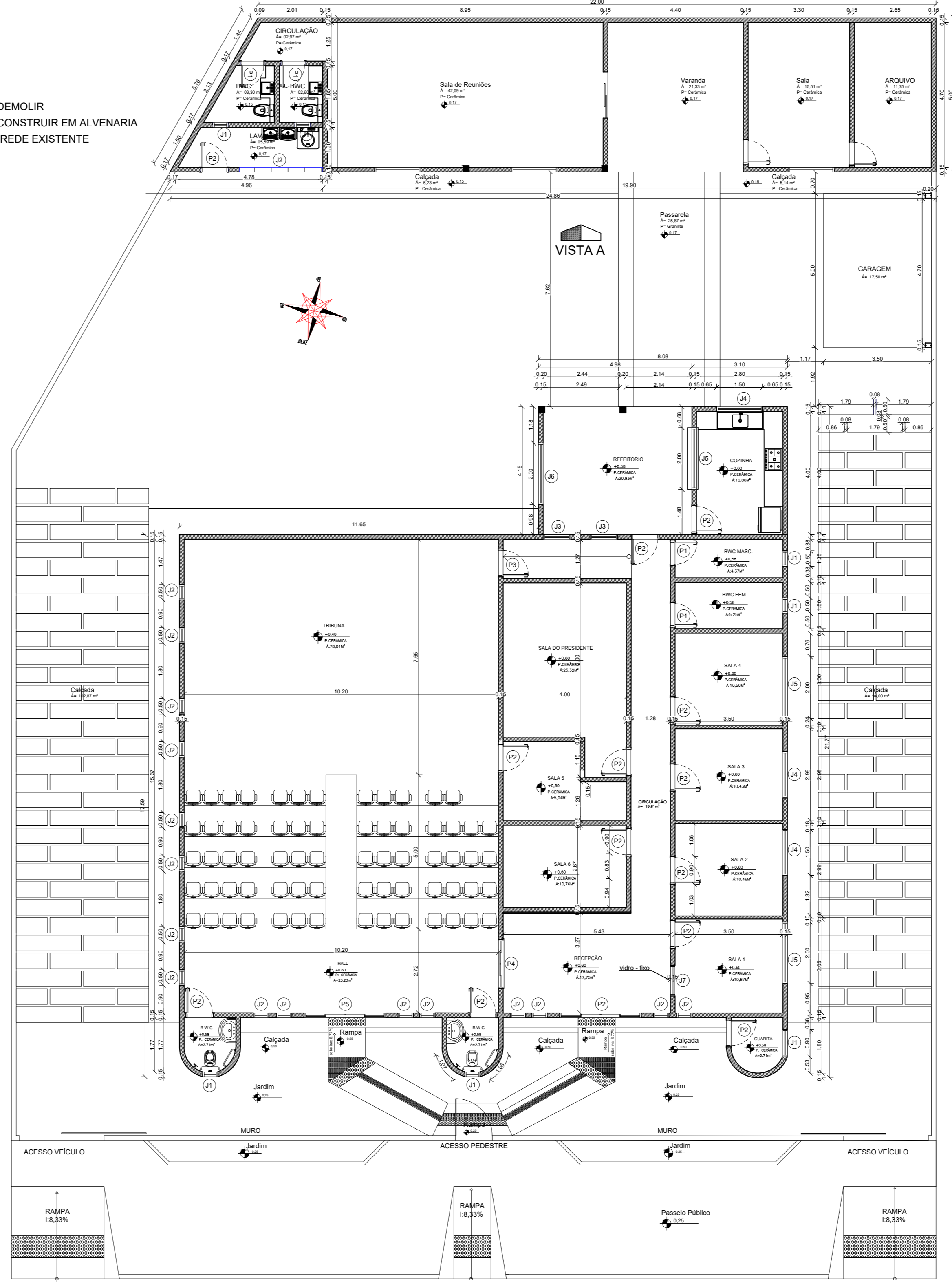


1 PLANTA EXISTENTE/DEMOLIR  
ESCALA 1/25

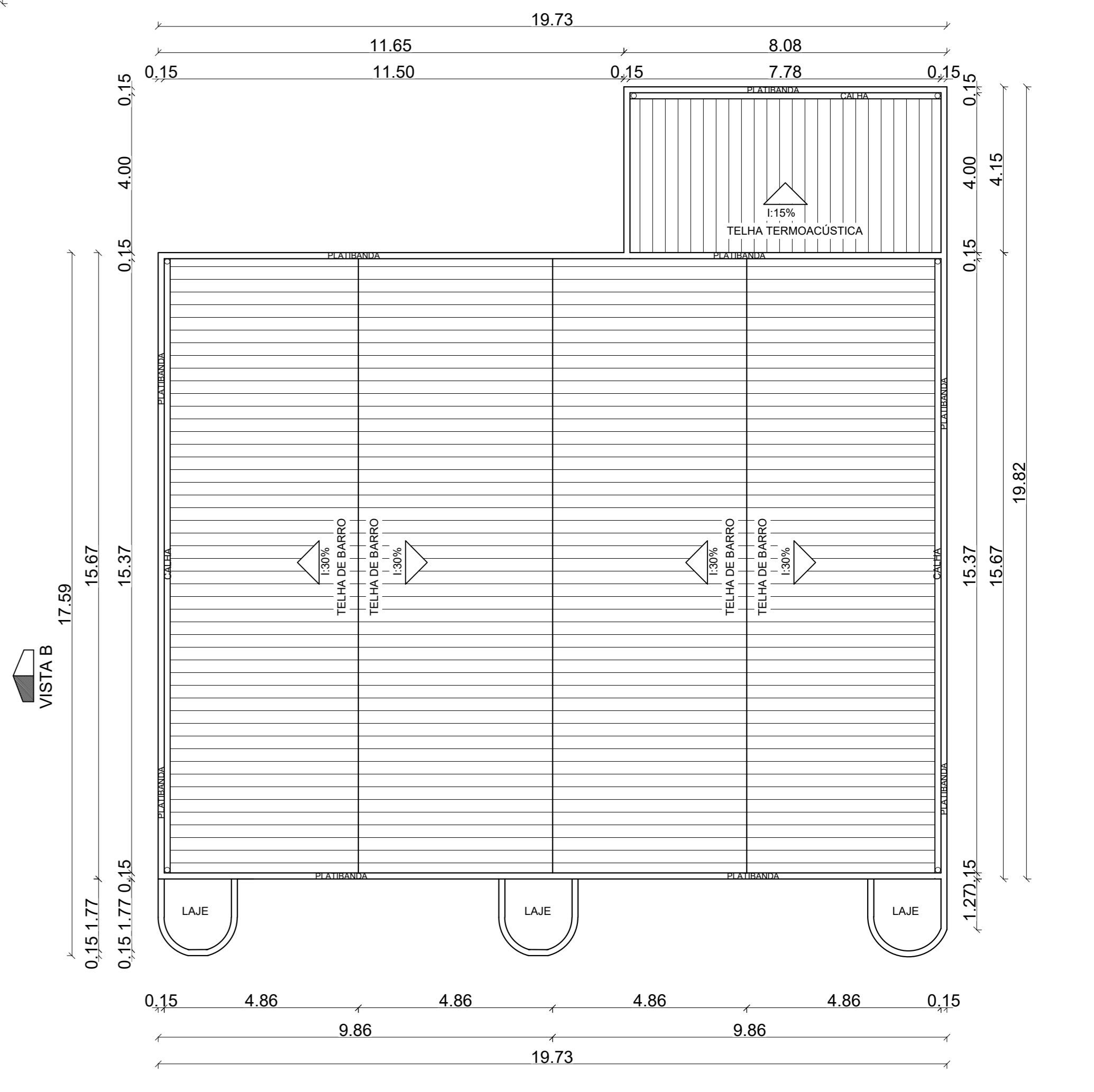


2 PLANTA CONSTRUIR  
ESCALA 1/25

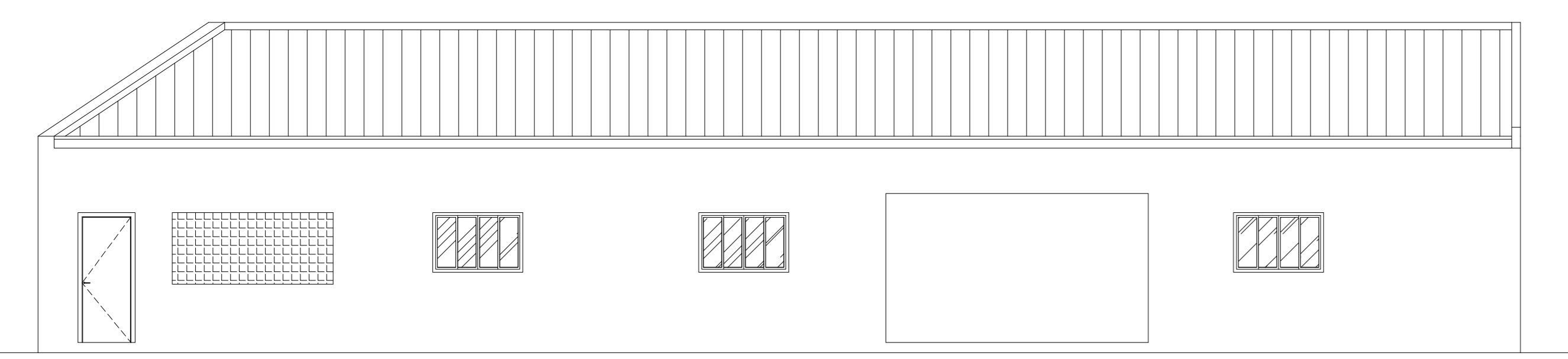
■ A DEMOLIR  
■ A CONSTRUIR EM ALVENARIA  
■ PAREDE EXISTENTE



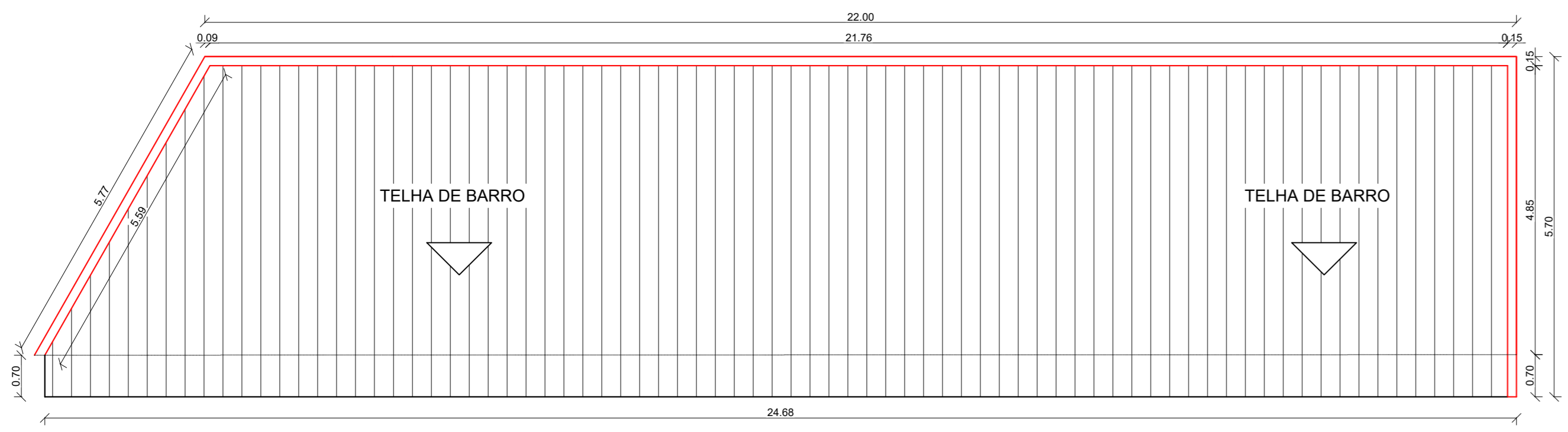
3 PLANTA TÉCNICA FINAL/IMPLANTAÇÃO-LOCAÇÃO  
ESCALA 1/100



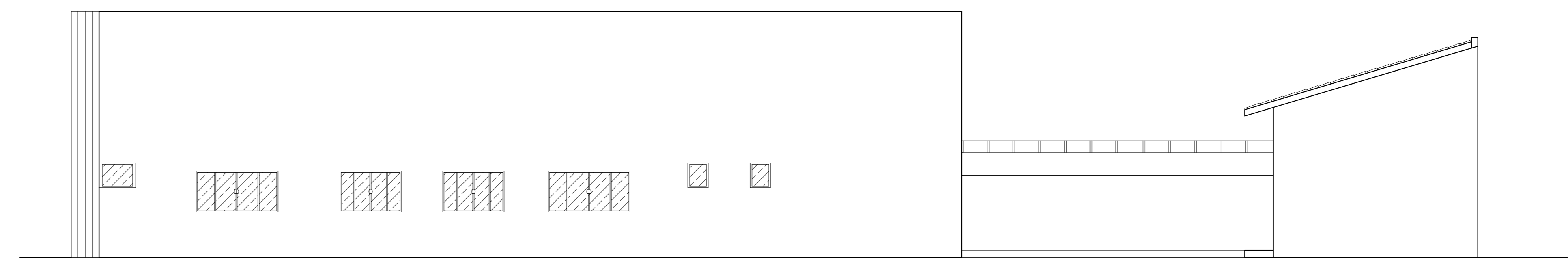
4 PLANTA DE COBERTURA  
ESCALA 1/100



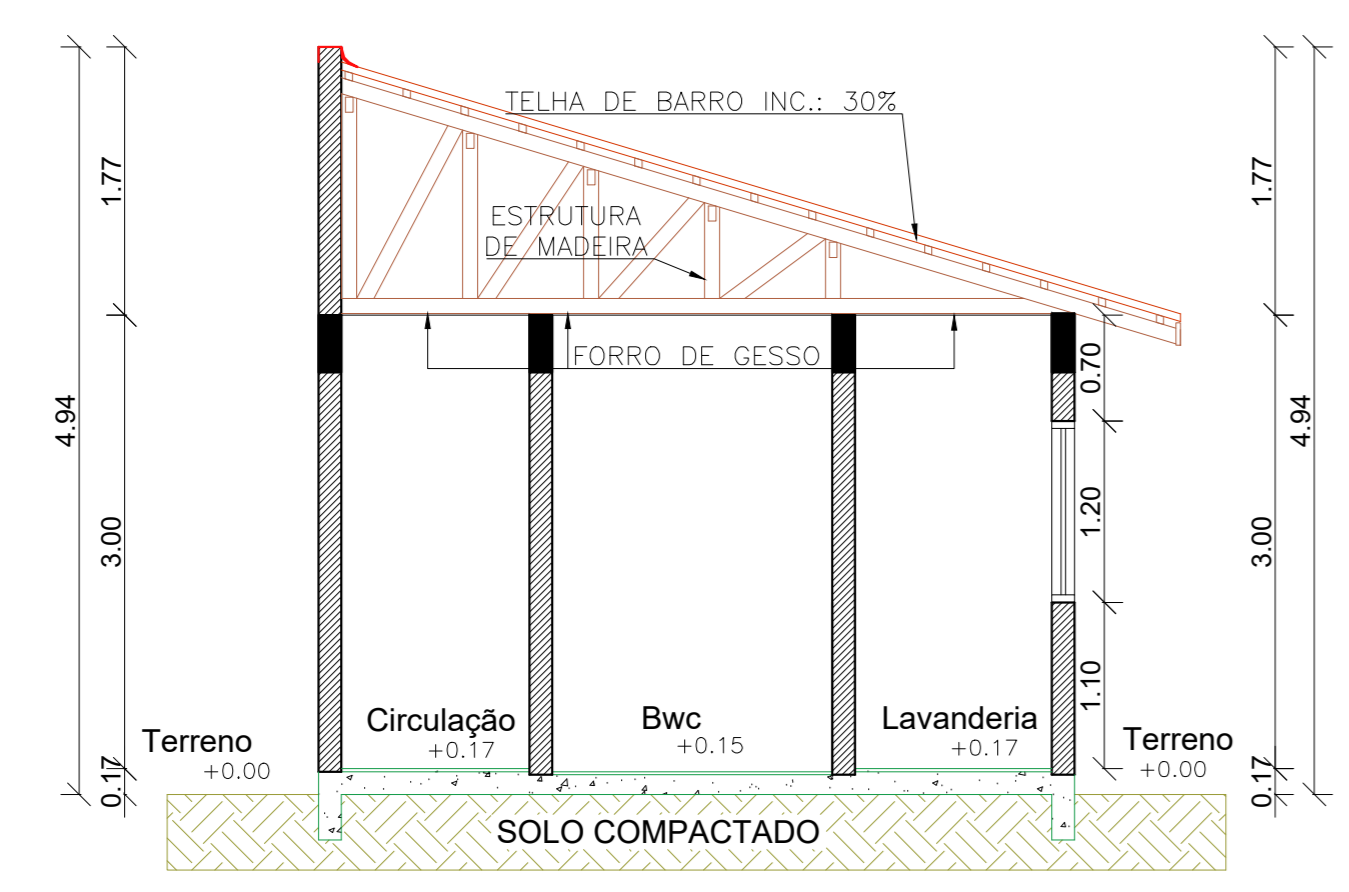
8 VISTA A  
ESCALA 1/75



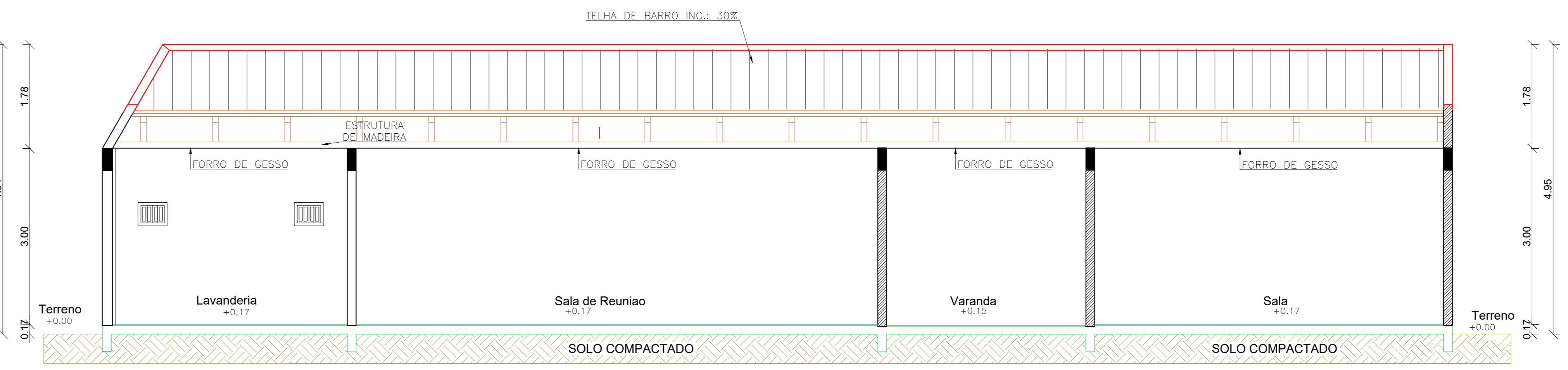
5 PLANTA DE COBERTURA  
ESCALA 1/75



9 VISTA B  
ESCALA 1/75



6 CORTE AA'  
ESCALA 1/50



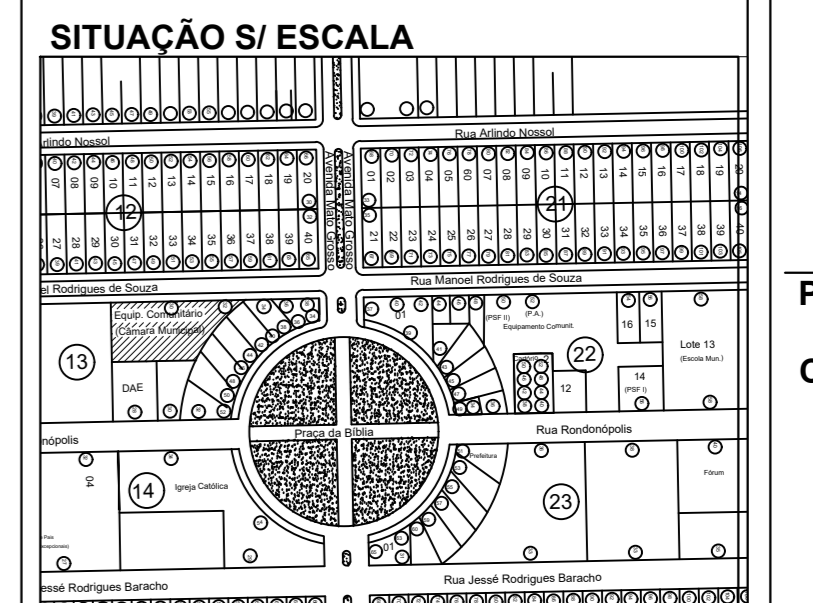
7 CORTE BB'  
ESCALA 1/50

QUADRO DE ESQUADRIAS						
PORTAS						
TIPO	DIMENSÕES		Peit.	Qtd.	MODELO/TIPO	MATERIAL
	Larg.	Alt.				
P1	0,70	2,10	-	02	01 FOLHA DE ABRIR	MADERA
P2	0,80	2,10	-	1	01 FOLHA DE ABRIR	MADERA
JANELAS						
J1	0,60	0,40	1,70	02	MAXIM-AR	VIDRO TEMPERADO
J2	2,70	1,20	0,90	01	-	ELEMENTO VAZADO

PROJETO ARQUITETÔNICO

FOLHA 01/01

PROJETO DE REFORMA E AMPLIAÇÃO  
 LOCAL: Rua Manoel Rodrigues de Souza, Centro, Quadra 13, Lote 13  
 REF.: Planta Técnica, Planta de Demolição, Cobertura, Cortes e Fachadas  
 PROP.: Câmara Municipal de Nova Monte Verde-MT CNPJ:33.683.772/0001-24  
 ESCALA: Indicadas  
 MUN./EST.: Nova Monte Verde-MT



Áreas em m2	
Terreno	1.036,60m <sup>2</sup>
Á Construir	17,64 m <sup>2</sup>
Área existente	499,58m <sup>2</sup>
Livre	519,38m <sup>2</sup>

Prop.: Câmara Municipal de Nova Monte Verde  
 CNPJ:33.683.772/0001-24

Autor do Projeto e Resp. Técnico:  
 Jean Garatini Vizotto  
 Eng. Civil - Crea MT/035714